

SAILMAKERS INFO SHEET

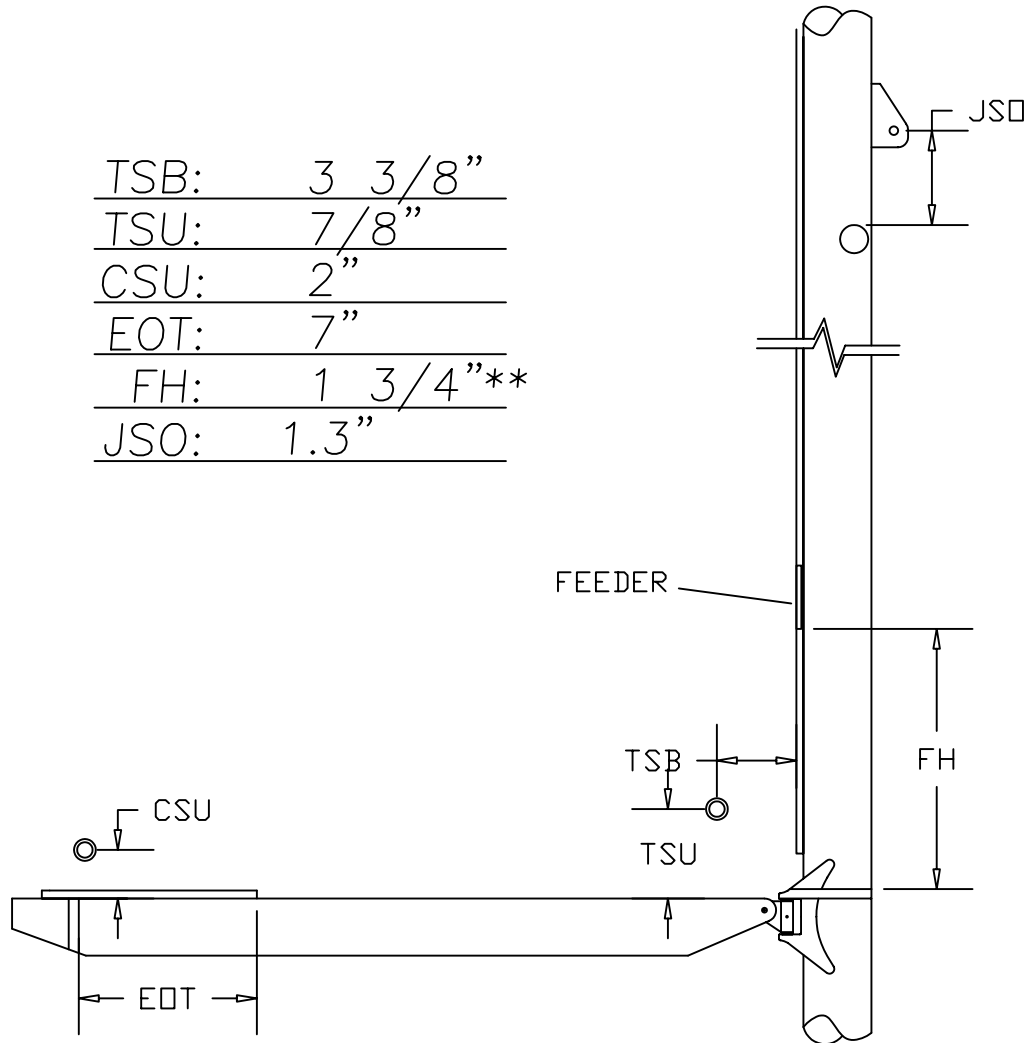
YACHT: **SABRE 426**

DATE: 11/12/02

I:	56.5'
J:	16.6'
P:	49.5'
E:	17.5'
ISP:	56.75'
BAS:	5.71'

TSB:	3 3/8"
TSU:	7/8"
CSU:	2"
EOT:	7"
FH:	1 3/4" **
JSO:	1.3"

S1:	16.38'
S2:	30.51'
S3:	43.5'



BOOM SECTION: 205 AL

MAST SECTION: 237 AL

FOOT GROOVE: SEE ATTACHED

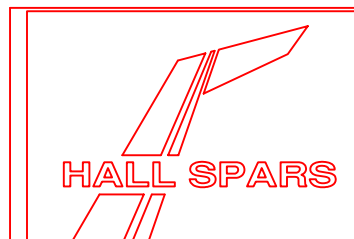
LUFF GROOVE: SEE ATTACHED

NOTES:

HEADSTAY PIN TO PIN LENGTH: 58' 3-1/4" (including 6-7/8" toggle)

UNLESS OTHERWISE SPECIFIED, ALL HEIGHTS ARE FROM SHEER

** FOR STANDARD TRACK OPTION ONLY. CHECK OPTION PACKAGE (ANTAL 50, HARKEN OR TIDES MARINE)



17 PECKHAM DRIVE
Bristol, RI 02809
USA

(401) 253-4858 Ph
(401) 253-2552 Fax

103110.2043@compuserve.com
hallspar@ids.net
www.hallspars.com